

Our Milestone

Completed Project



Pukhraj Lifestyle
Station Main Road, Opp RAPP Guest House, Kota Jn.



Pukhraj Jasmine
Station Main Road, Opp RAPP Guest House, Kota Jn.

Our Running Project



Pukhraj Divine
Main 80ft. Link (New Bus Stand-Baran Road)
Aaditya Awas Bajrang Nagar, Kota



PUKHRAJ HOMES PVT. LTD

(A Unit of Pukhraj Group)

Corporate Office: 6, New Motor Market, 1st Floor, Opp. Airport Gate,
Above Bank of Maharashtra, Jhalawar Road, Kota-324 007 (Raj.) | Ph. 0744-2366055
Website : www.pukhrajgroup.com | Email : pukhrajhomes@gmail.com

Principal Architect

B+D ARCHITECTS

ARCHITECTS | URBAN DESIGNERS | INTERIOR DESIGNERS
267, Muktanand Nagar, Jaipur-302017
Tel. (0141) 2553546, 09929990190

PLUMBING, SANITARY &
ELECTRIC CONSULTANT
DESIGN 2 OCCUPANCY SERVICES LLP
JAIPUR

STRUCTURE CONSULTANT
ANR IP Pvt. Ltd., Jaipur

For Enquires & Booking
9166440055 | 9928871111 | 9829039655



2/3/4 BHK Premium Apartment

Tech N Gen #98293344122, 9799390022



Welcome to...



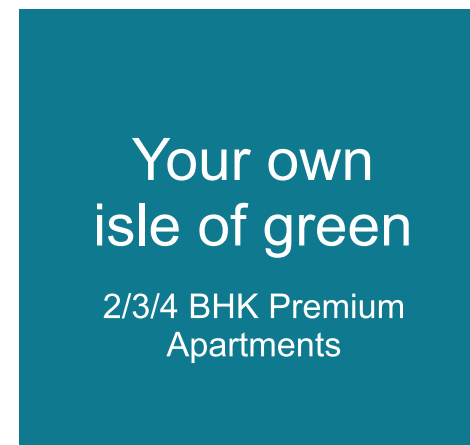
2/3/4 BHK Premium Apartment

It Really is...Where Beauty Welcomes you The Moment You Step-In



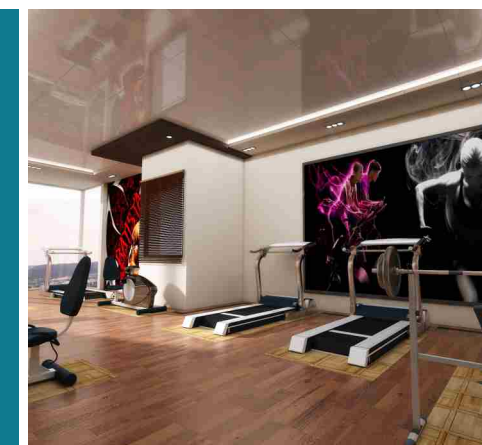
deluxe living

2/3/4 BHK Premium Apartments



Your own isle of green

2/3/4 BHK Premium Apartments



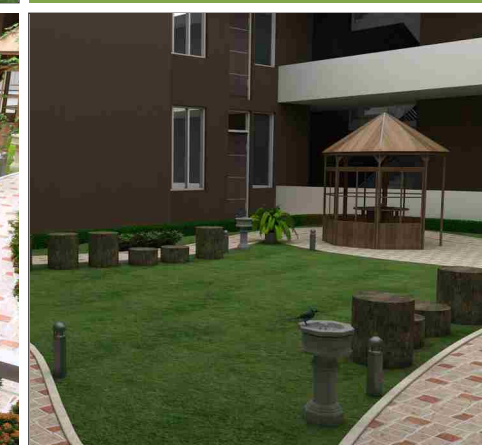
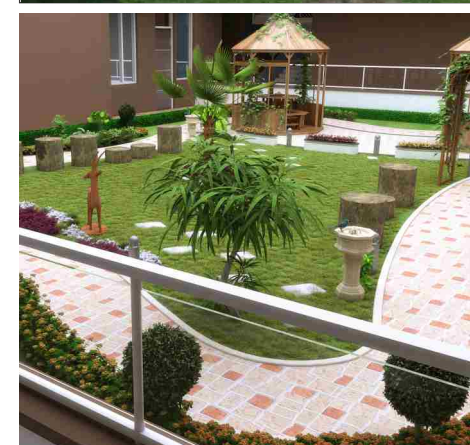
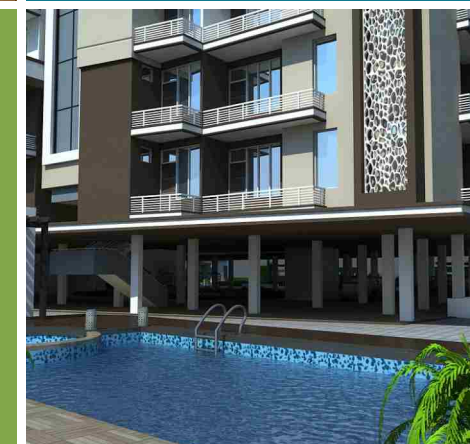
resort like club house

Aura Club House



family zone

kids play area sitting area



Entertainment area

home theatre



2/3/4 BHK Premium Apartment

ORCHESTRATED TO PERFECTION

Express your world...
Move into the realm of style





Spacious Living Room

A sense of grandeur accompanied by a feeling of openness and clarity



It is an exciting drawing room to use for living space that is restfully energizing. Its classical appearance is accentuated by vastness of the space and its functionality. A walk through the living room reveals a graceful flamboyance.





Master Bedroom

A new dimension in luxury lifestyle

Bedroom is an elegant amalgamation of style and sensibility, contributing to the aesthetic value. It gives you an instant sense of comfort, cosiness and intimacy. A relaxed space that home is meant to offer...





2/3/4 BHK Premium Apartment

A new dimension in luxury lifestyle

Pukhraj Aura is well located in the heart of growing Kota. Living at Pukharj Aura will give you the feeling of being part of the beautiful, secured residential neighborhood. It's the best in its class



Welcome to club life at Pukhraj Aroma

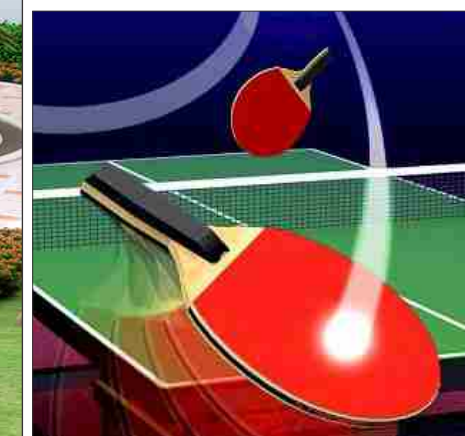


Club House

Swimming Pool
Gymnasium
Table Tennis
Carom/Card Room
Family Theaters
Kids Play Area
Toddler Pool
Library
Guest Bedroom
Lush Green Garden



Club House
like
resort

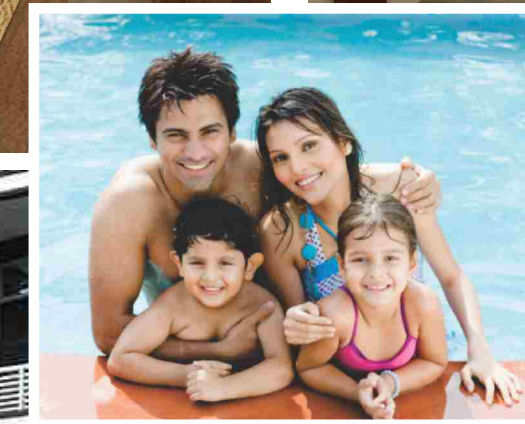
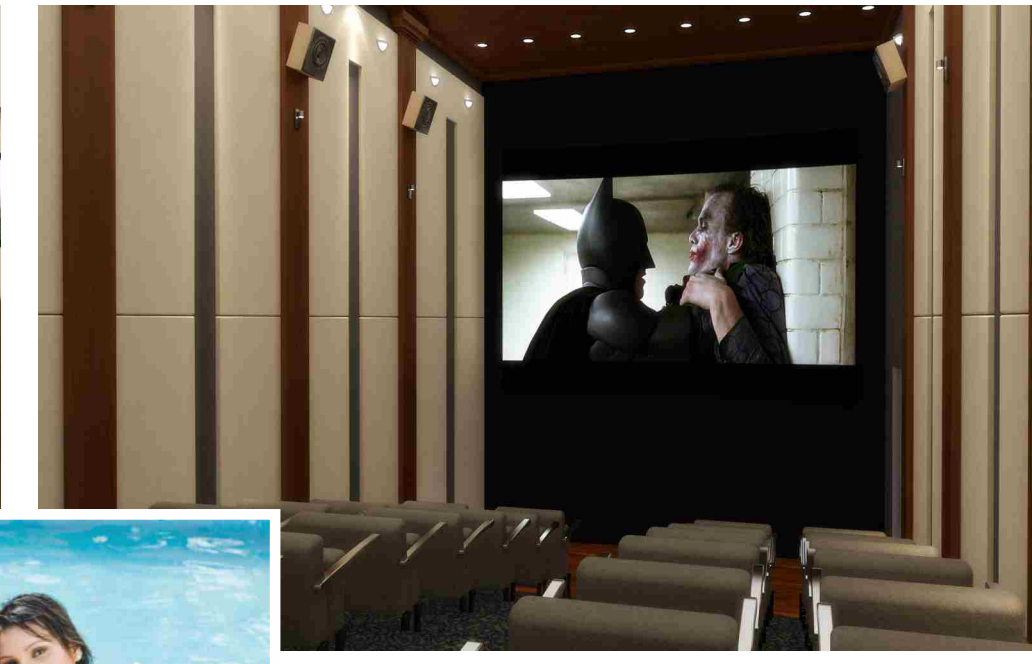
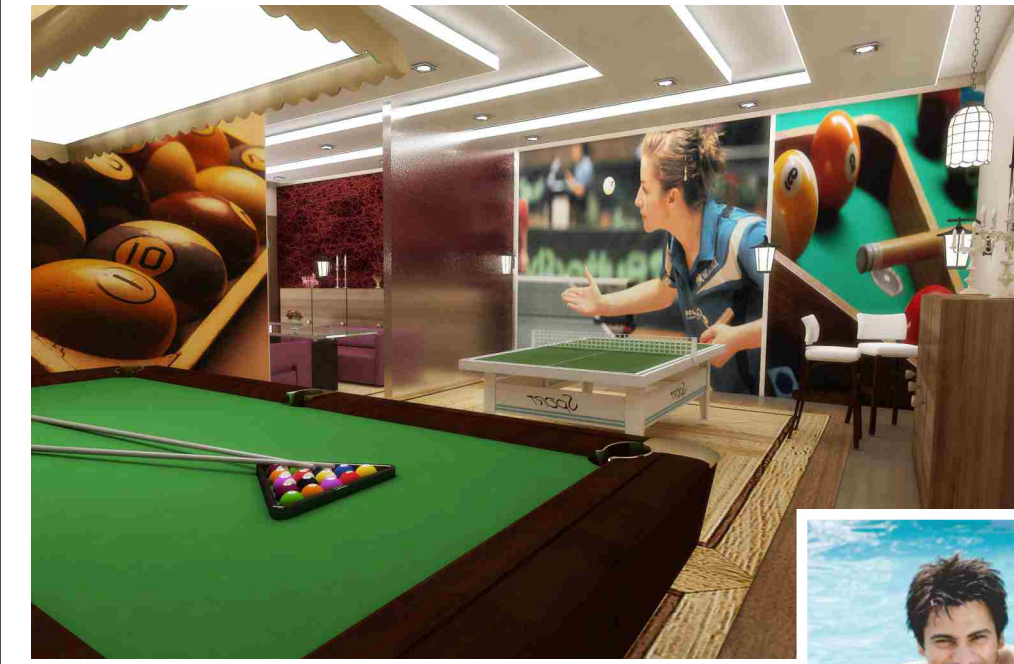


Club House
for wholesome
entertainment



C L U B H O U S E

Well equipped club house to relax with friends and family





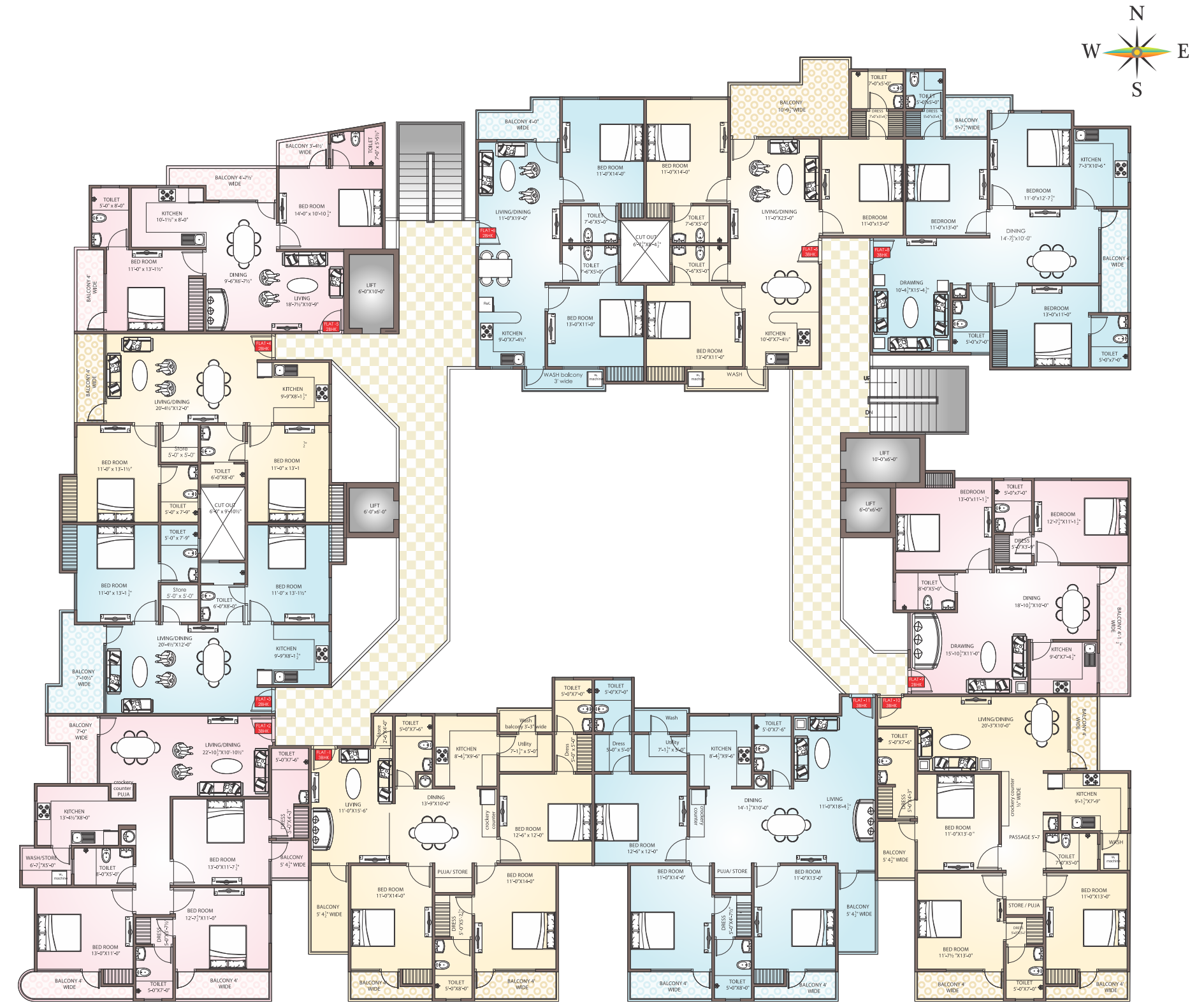
Let The Joys Be Precious...!

Even after an eventful day, keep exhaustion at the bay, Feel renewed forever. Get into sporting mode or take a stroll at a landscaped garden... rejuvenate yourself, the way you want.



Stilt Floor plan

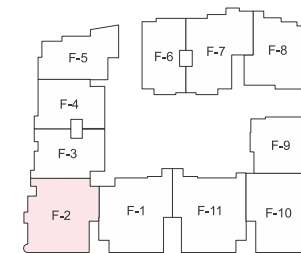
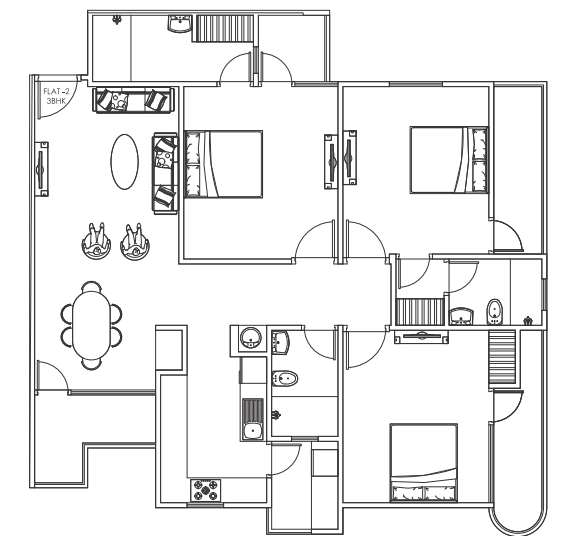
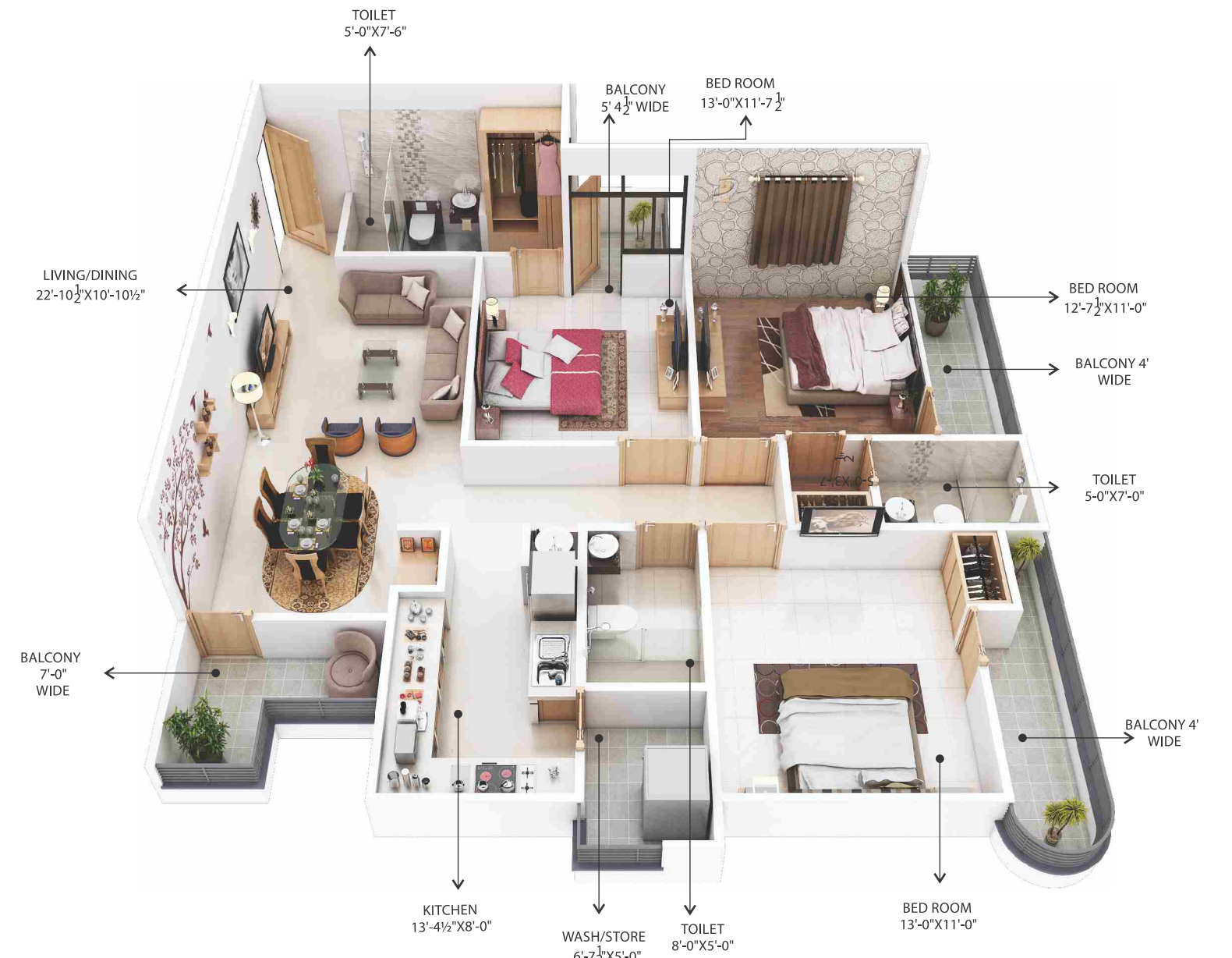
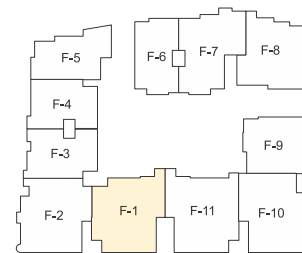
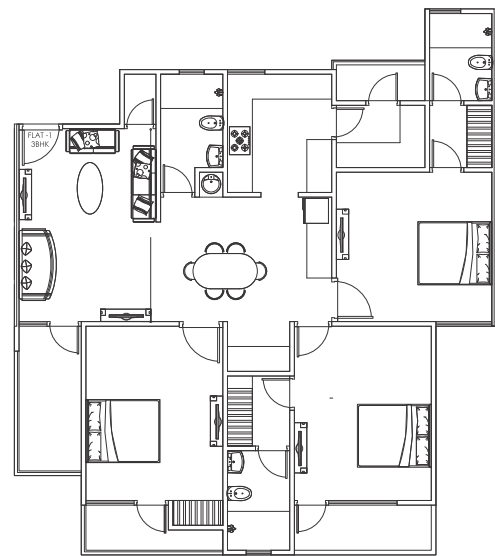
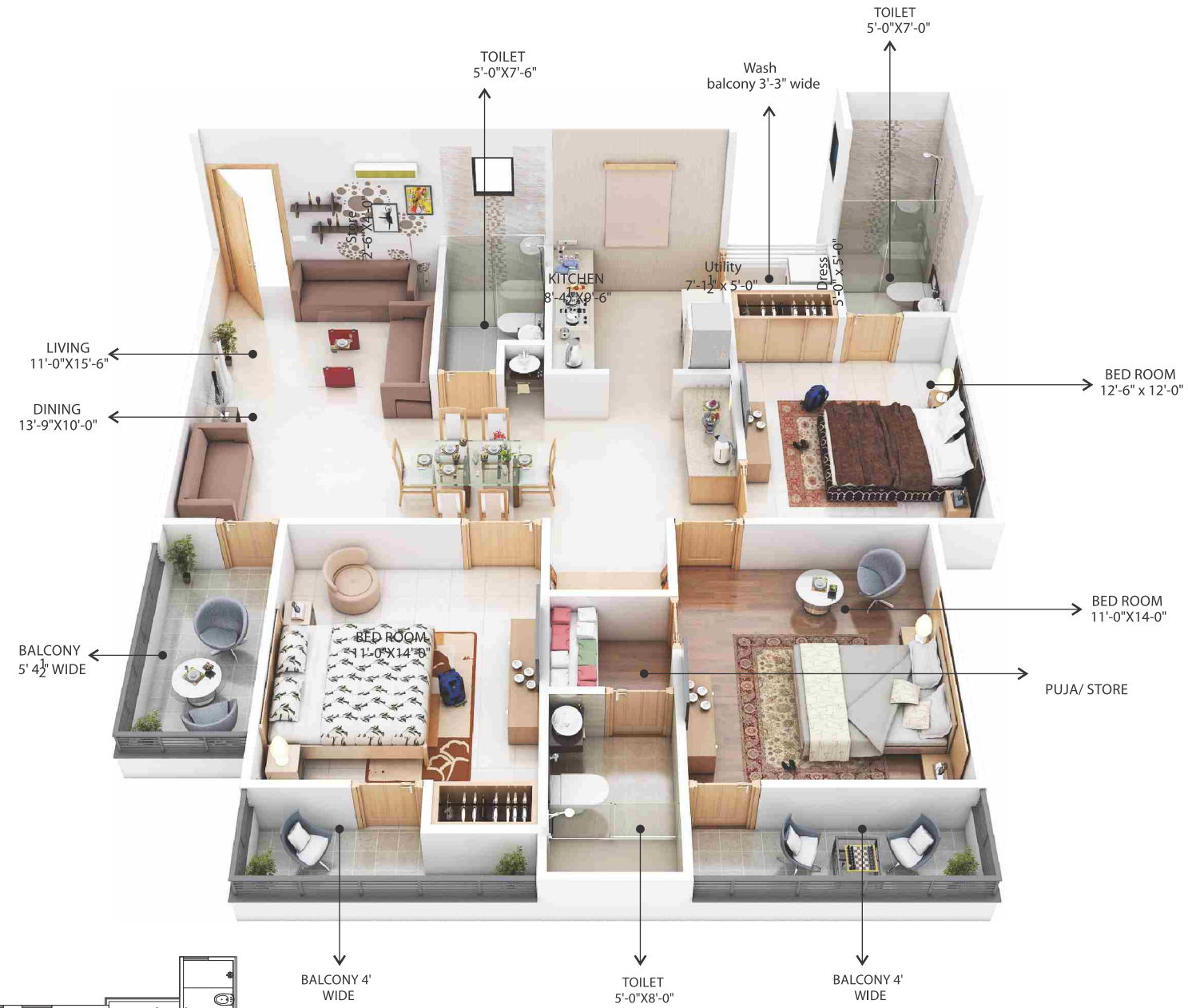
Typical Floor plan



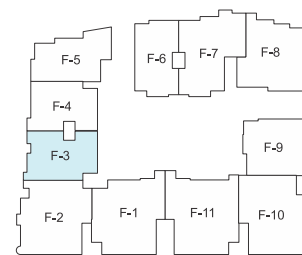
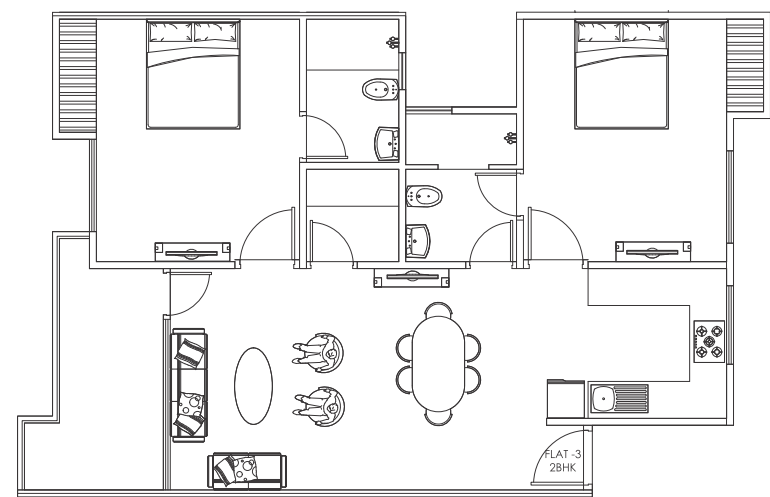
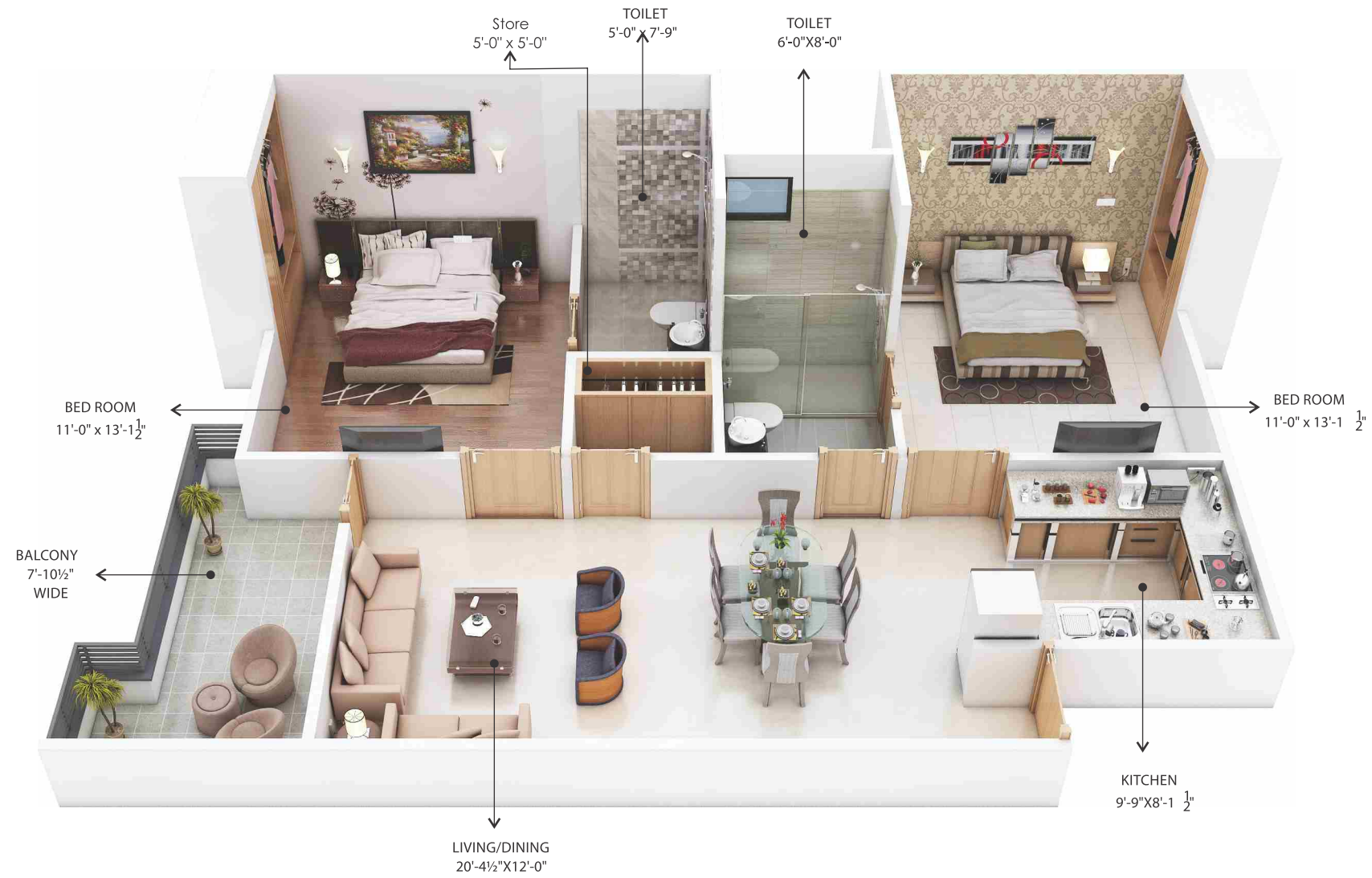
Flat No.	Flat No.01	Flat No.02	Flat No.03	Flat No.04	Flat No.05	Flat No.06	Flat No.07	Flat No.08	Flat No.09	Flat No.10	Flat No.11
Saleable Area	1953.34Sq.Ft.	1893.27Sq.Ft.	1285.30Sq.Ft.	1233.64Sq.Ft.	1289.08Sq.Ft.	1206.87Sq.Ft.	1701.46Sq.Ft.	1649.29Sq.Ft.	1314.52Sq.Ft.	1843.26Sq.Ft.	2023.6Sq.Ft.

3D Module F-1 (3BHK) 1953.34 Sq.Ft.

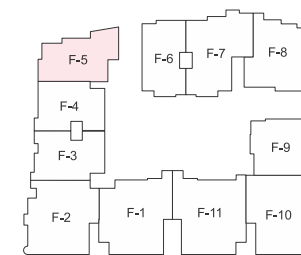
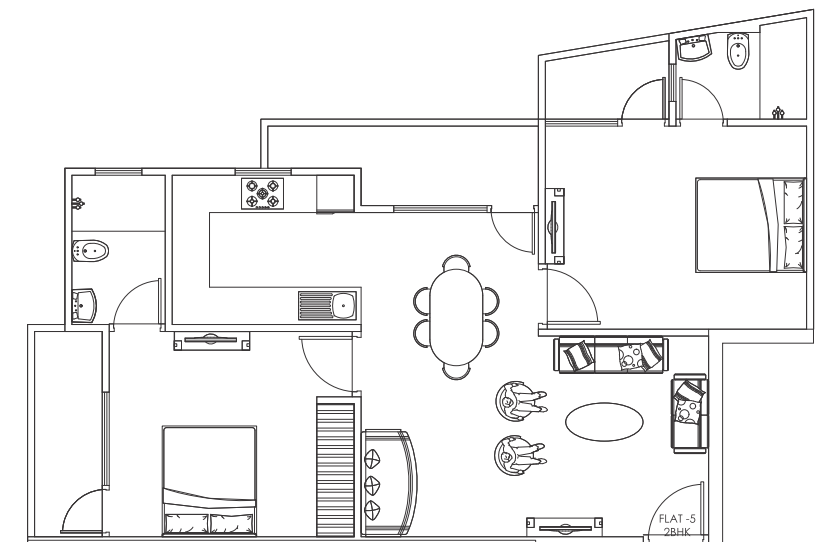
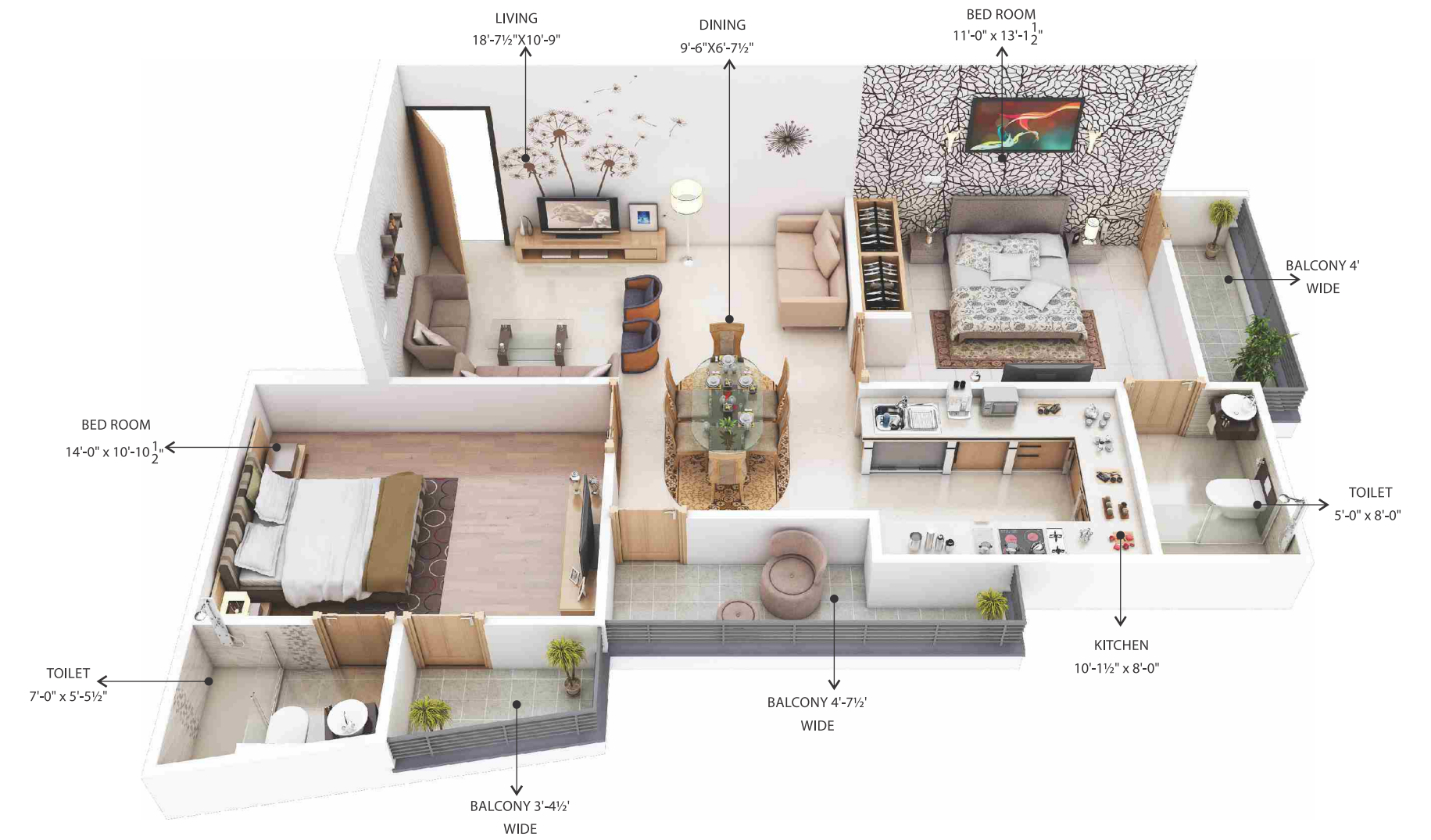
3D Module F-2 (3BHK) 1893.27 Sq.Ft.



3D Module F-3 (2BHK) 1285.30 Sq.Ft.

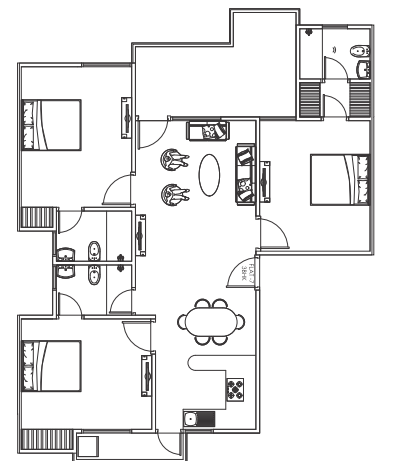
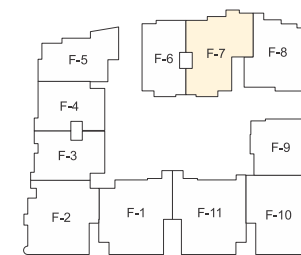
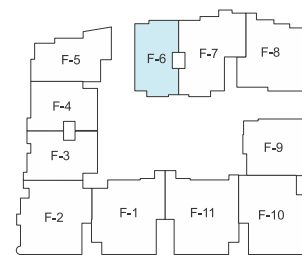
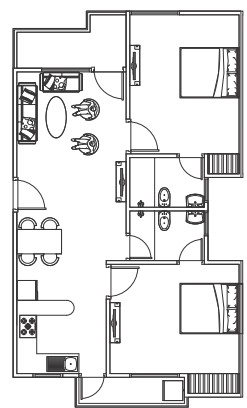
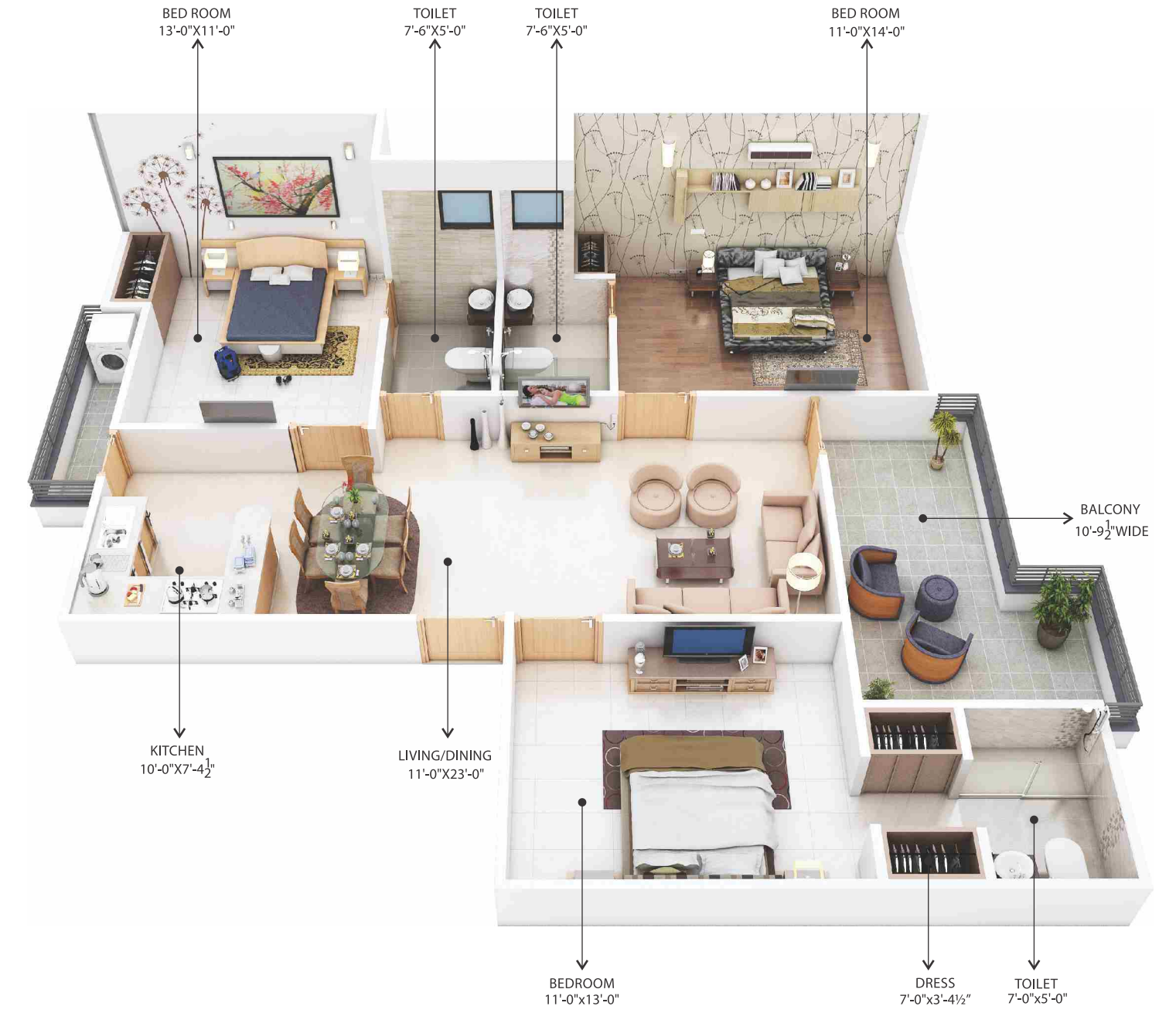
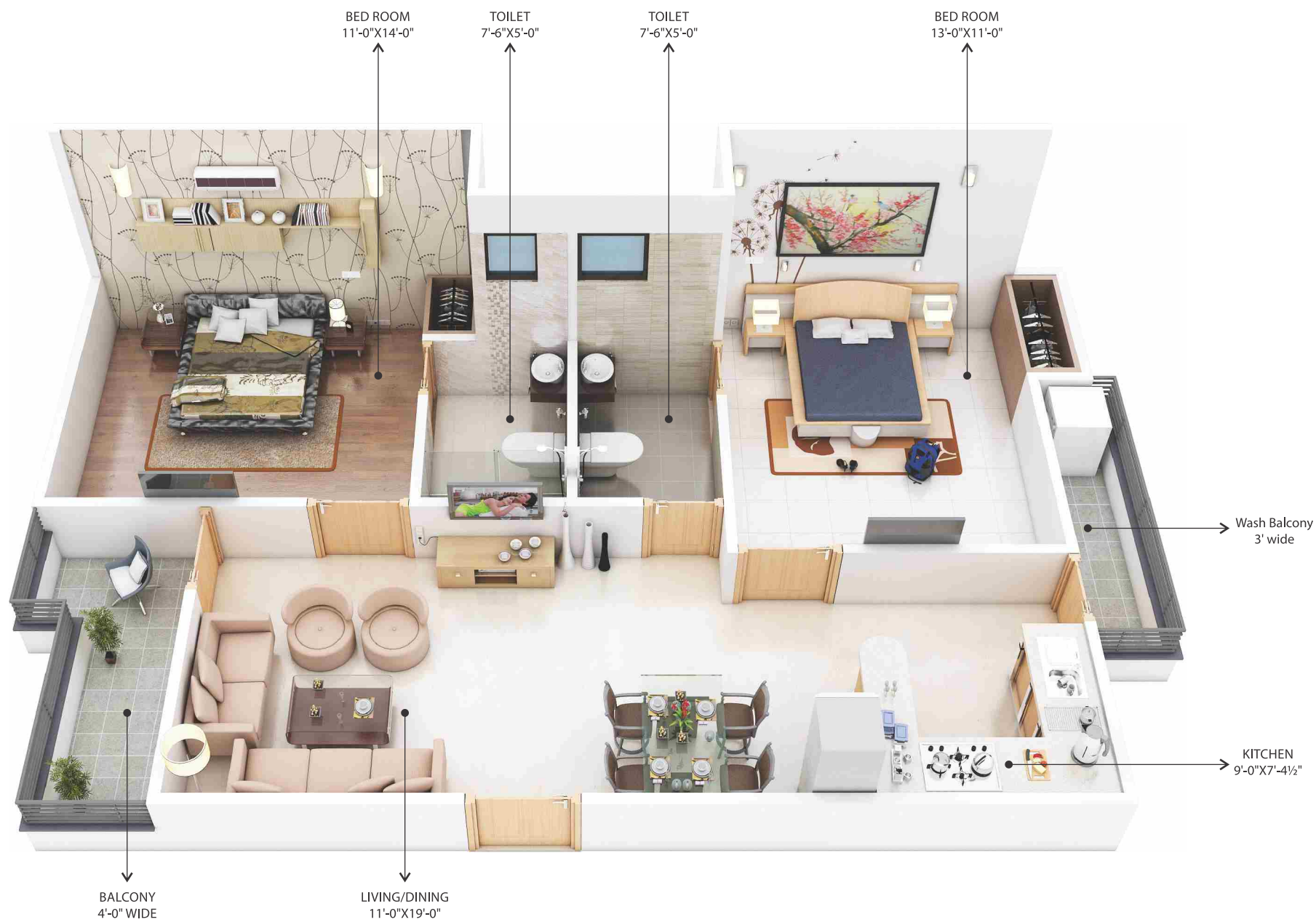


3D Module F-5 (2BHK) 1289.08 Sq.Ft.



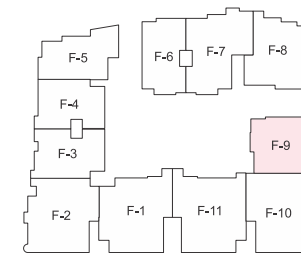
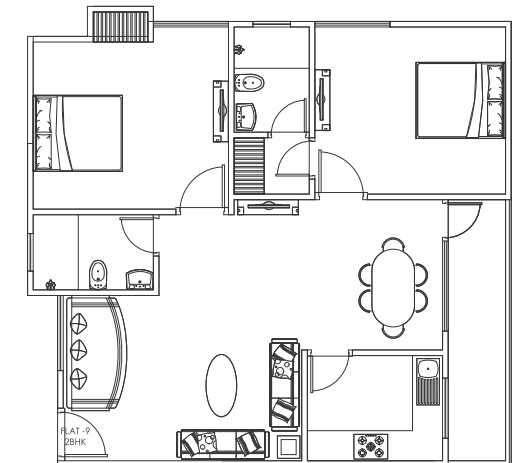
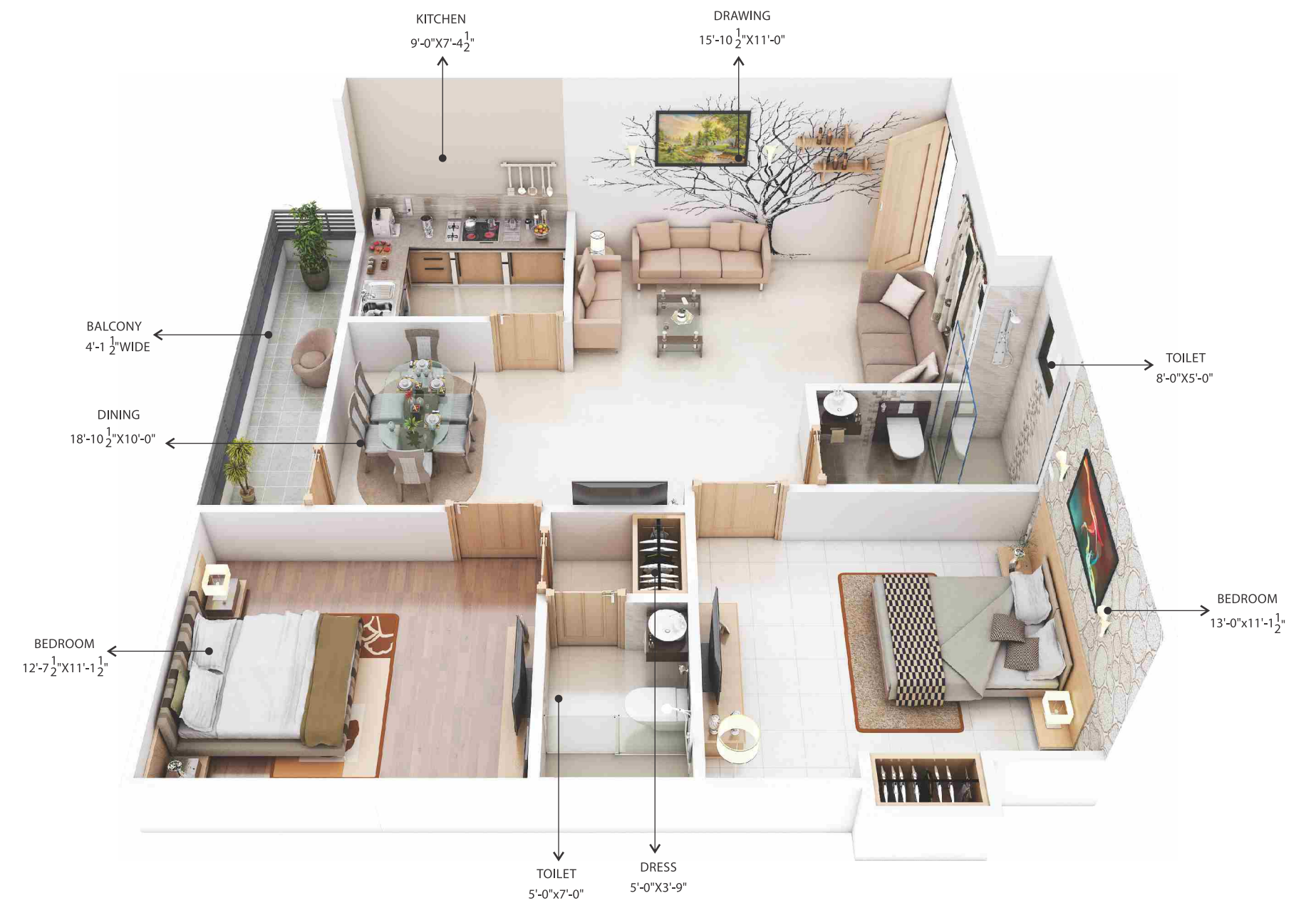
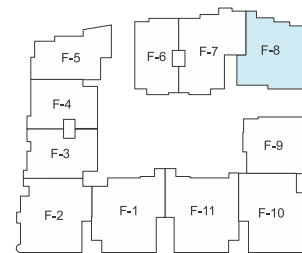
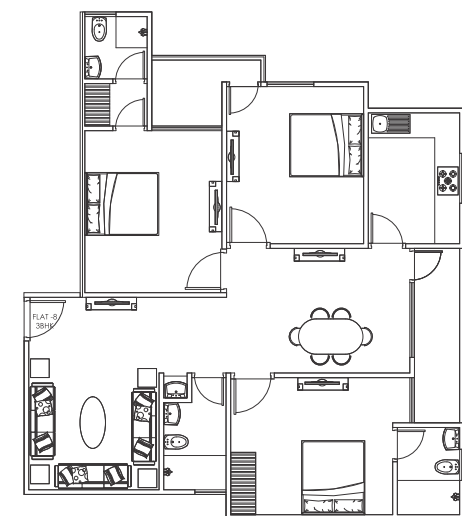
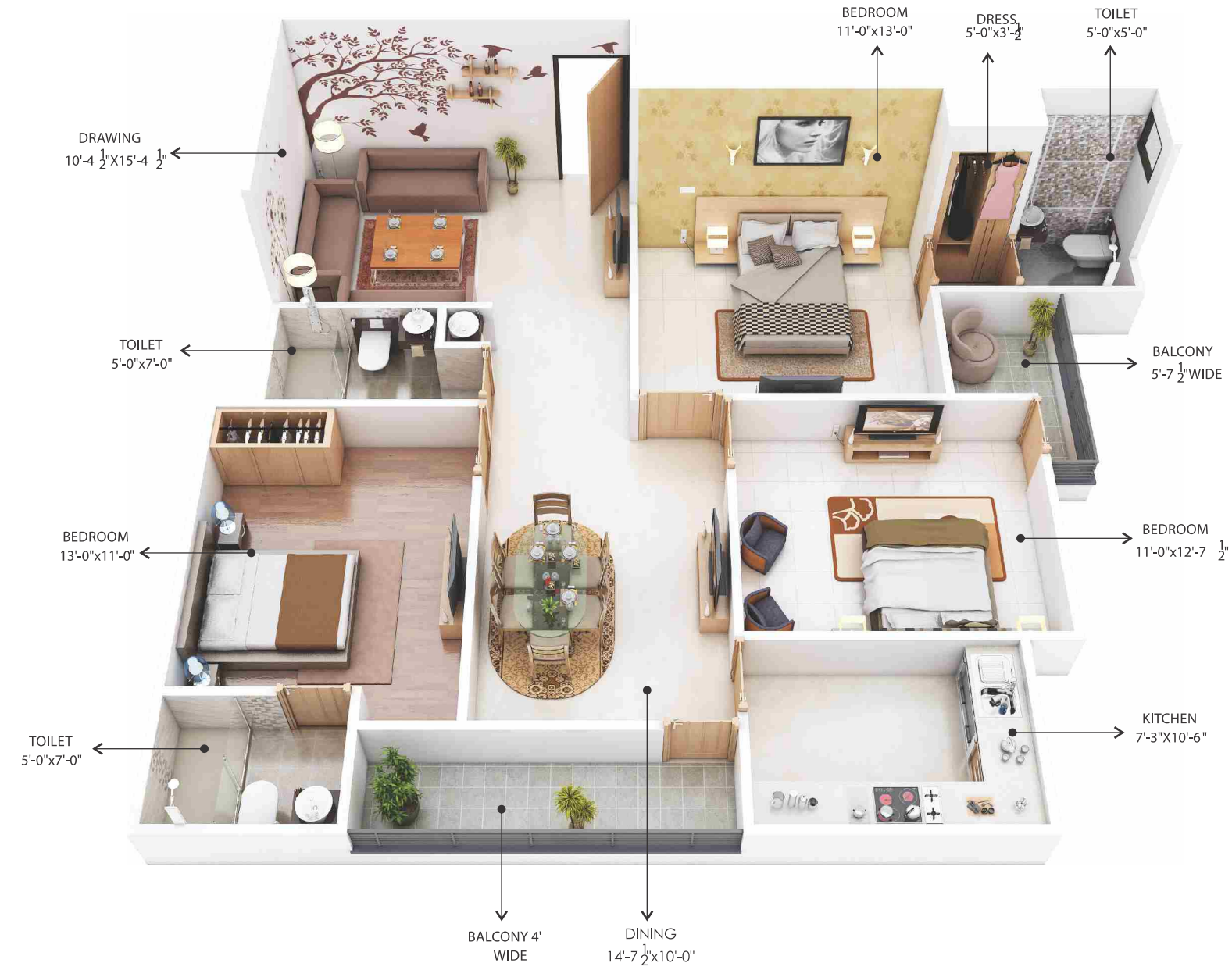
3D Module F-6 (2BHK) 1206.87 Sq.Ft.

3D Module F-7 (3BHK) 1701.46 Sq.Ft.



3D Module F-8 (3BHK) 1649.29 Sq.Ft.

3D Module F-9 (2BHK) 1314.52 Sq.Ft.

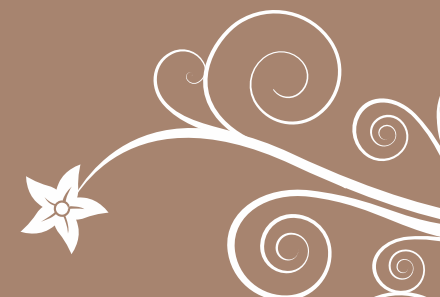


3D Module F-10 (3 BHK) 1843.26 Sq.Ft.



Your own UNMATCHED FEATURES

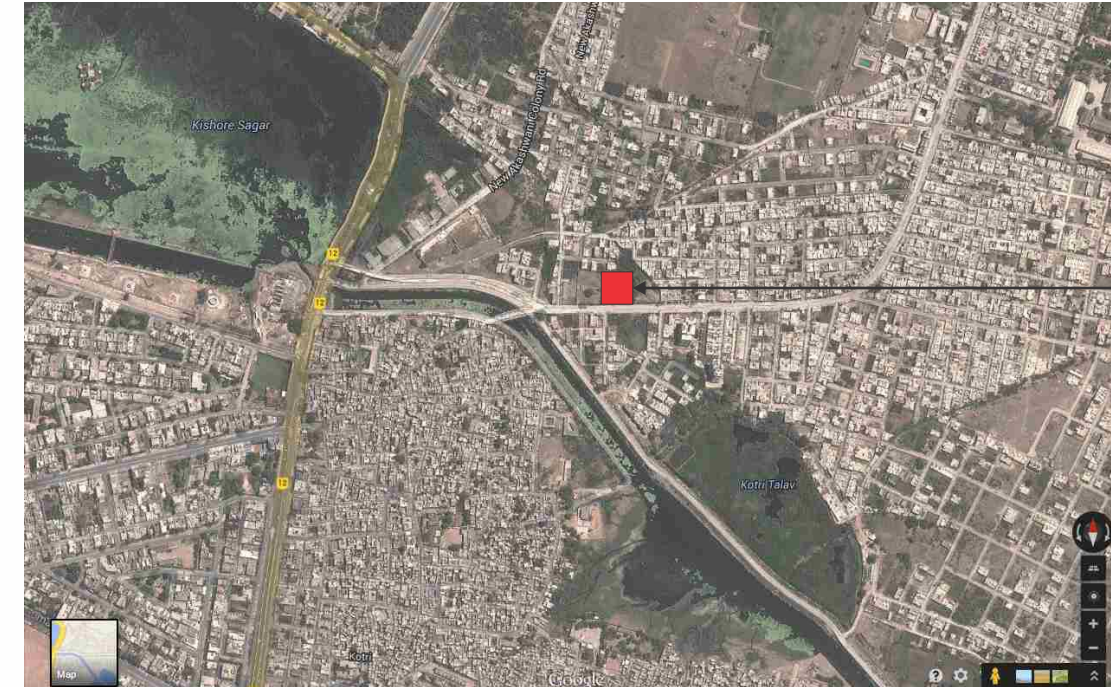
- ✓ **LOCATION ADVANTAGE**
Pukhraj AURA give you the Best Convenient Location in the Heart of the Kota City having a wide frontage more than 200 ft on well Connected 80 feet wide linked road (Kotri-Bajrang Nagar) also having the great panoramic view of kishore sagar talab & 7 wonders surrounded by the fastest developing Residential area of Kota City. The easy accessibility from main road to the **Pukhraj AURA**.
- ✓ **SPACIOUS APARTMENTS**
 A generous space will provide every room and all the areas to enjoy, cheer & celebrate all the movements during your life time.
- ✓ **SPACIOUS BALCONY**
 Generous balcony area will allow to enjoy relaxing moments during early morning and evening. A grand view of 7 wonders & kishore sagar lake with the surrounding luxurious landscape is an additional bonus. The balcony attached to the living and dining area Bedroom in **Pukhraj AURA** apartments gives a beautiful view of the area.
- ✓ **MODULAR KITCHEN**
 All apartments at **Pukhraj AURA** come with modular kitchen till counter level with granite top and stainless steel sink.
- ✓ **CLUB HOUSE AND RECREATION FACILITIES**
Pukhraj AURA will have an enviable mix of recreation and sports facilities for the entire family, incorporating a multi purpose/ party hall, gym, library, along with recreational facilities like jogging track, fitness walk & table tennis with fully furnished two Spacious Guest Rooms/family theater & family pool with toddler Pool at Ground Floor
- ✓ **HIGH SPEED ELEVATORS**
Pukhraj AURA are equipped with 4 high speed, spacious, well decorated elevators along with goods lift.
- ✓ **STORAGE**
 Ample recesses are provided for all bedrooms that are in addition to the stated room sizes. This provides for full capability for you to enable built in wardrobes or cupboards or to simply procure a elegantly designed spacious wardrobe as you desire. So storage problems become a thing of the past. Additional store & servant room also available at ground floor connected with EPBAX System
- ✓ **COMPLEX MANAGEMENT**
 The facilities and the infrastructure of the complex shall be maintained by a professional property management consultants/ Resident's Society.



SPECIFICATIONS

AREA	WALLS	FLOORING	DOORS	WINDOWS/ GLAZING	OTHERS
Living/Dinning	POP Punning with Acrylic Emulsion Paint	Vitrified Tiles	Premium quality Flush Doors with Membrane Skin/ CNC cut Doors	Aluminium/UPVC	Modular Switches
Bedrooms	POP Punning with Acrylic Emulsion Paint	Vitrified Tiles & Wooden in MB	Premium quality Flush Doors with Membrane Skin/ CNC cut Doors	Aluminium/UPVC	Modular Switches
Balconies/ Terrace	Water Proof Paint	Ceramic Tiles	Premium quality Flush Doors with Membrane Skin/ CNC cut Doors	Aluminium/UPVC	Modular Switches
Kitchen	Tiles upto 2 Ft. above the counter & Acrylic Emulsion in the balance area	Vitrified Tiles	Premium quality Flush Doors with Membrane Skin/ CNC cut Doors	Aluminium/UPVC	Modular Switches
Toilets	Designer Ceramic Tiles	Anti skid Ceramic Tiles	Premium quality Flush Doors	Aluminium/UPVC	Modular Switches
Other Features	Club House at top floor with 2 Guest Bedroom Multi Functional Hall Security : Door Phone Security, EPABX System, Gymnasium, TT Room, Card/Carom room, Karoke Theater with dollby sound system, Library, Society Office. • 2level parking Fire fighting system • 100% Power Backup in common area & Lifts • Provision for integrated kitchen • T.V. Points in all Bedroom & Drawing Room, DTH Facility • Geyser Point also in kitchen • Provision for water purifier • Modular switches, A.C. Drain system Provided				

LOCATION MAP



Pukhraj Aura
Steel Bridge Bajrang Nagar Main Road, Kota

